

NDIS READY

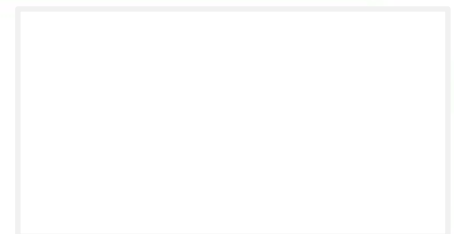
Getting NDIS Ready in New South Wales

Uniting LAC District Manager Karina Clarke

21st February 2017

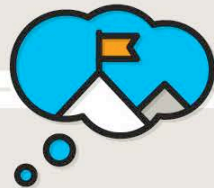
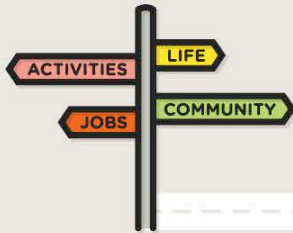


Delivering the NDIS in your community



What is the NDIS?

Reasonable and necessary supports



Help people achieve goals

A lifetime approach

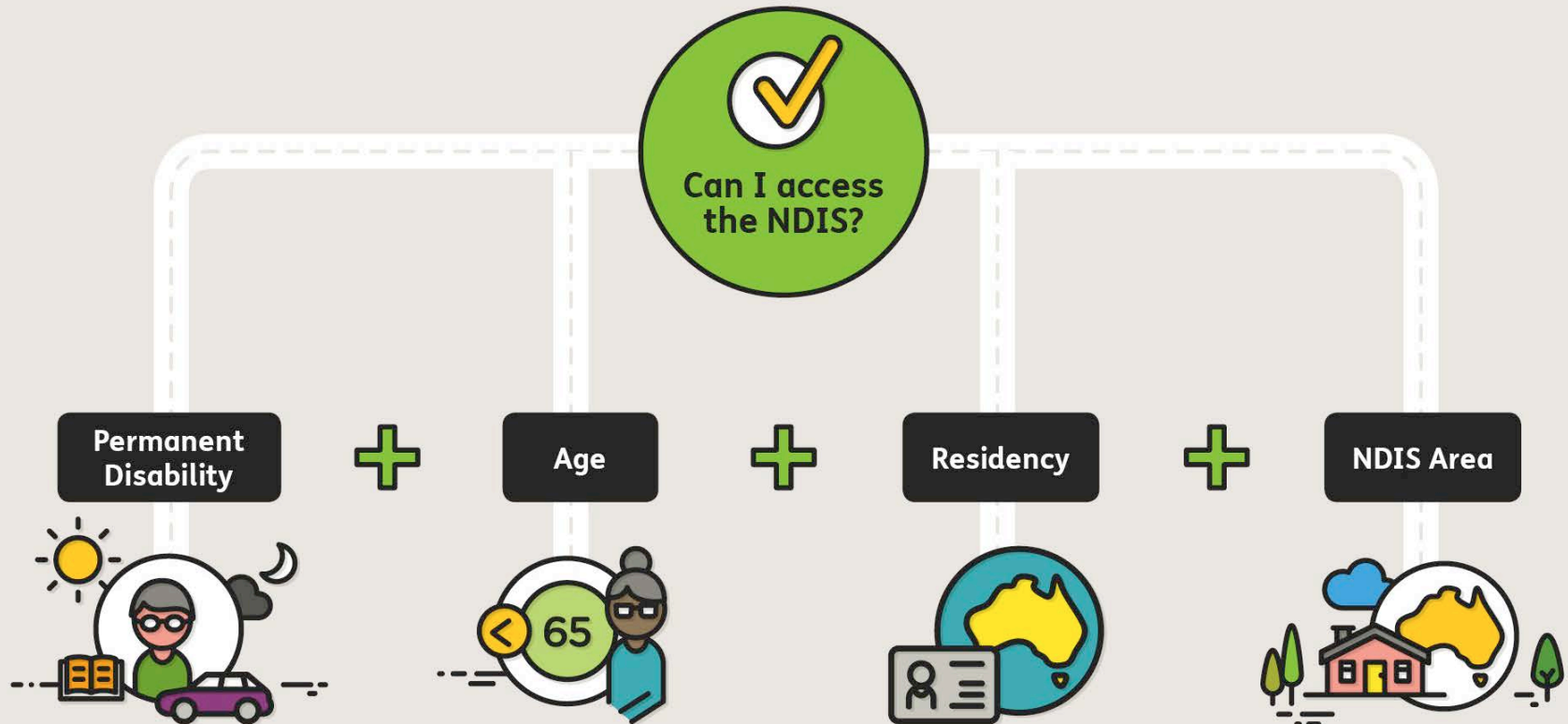


Information and referrals

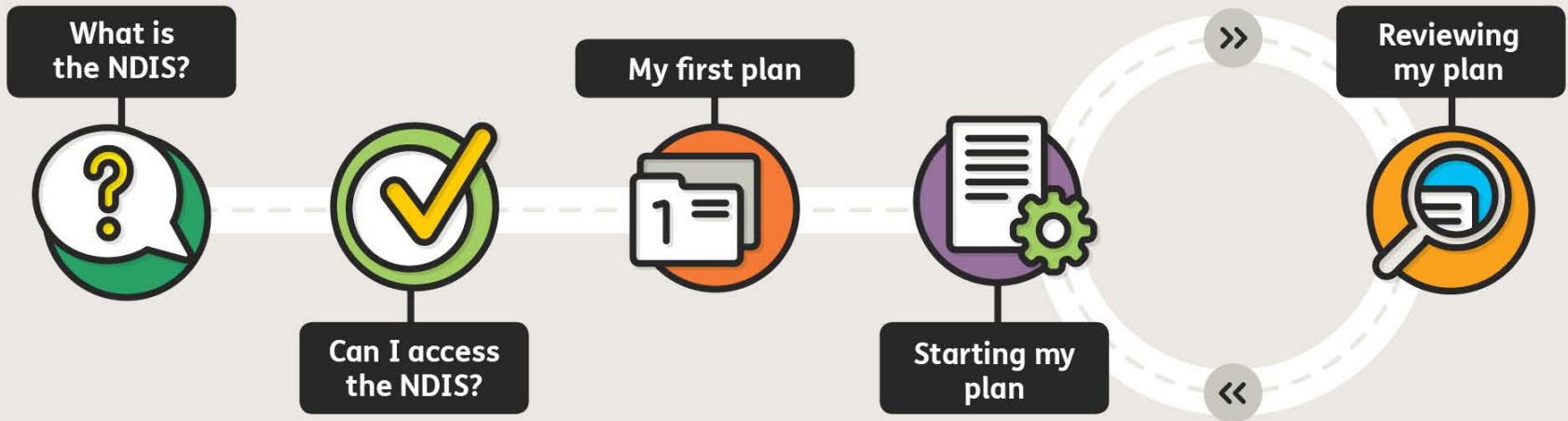
460,000 Australians



Can I access the NDIS?



My NDIS pathway



NDIS plans are individual

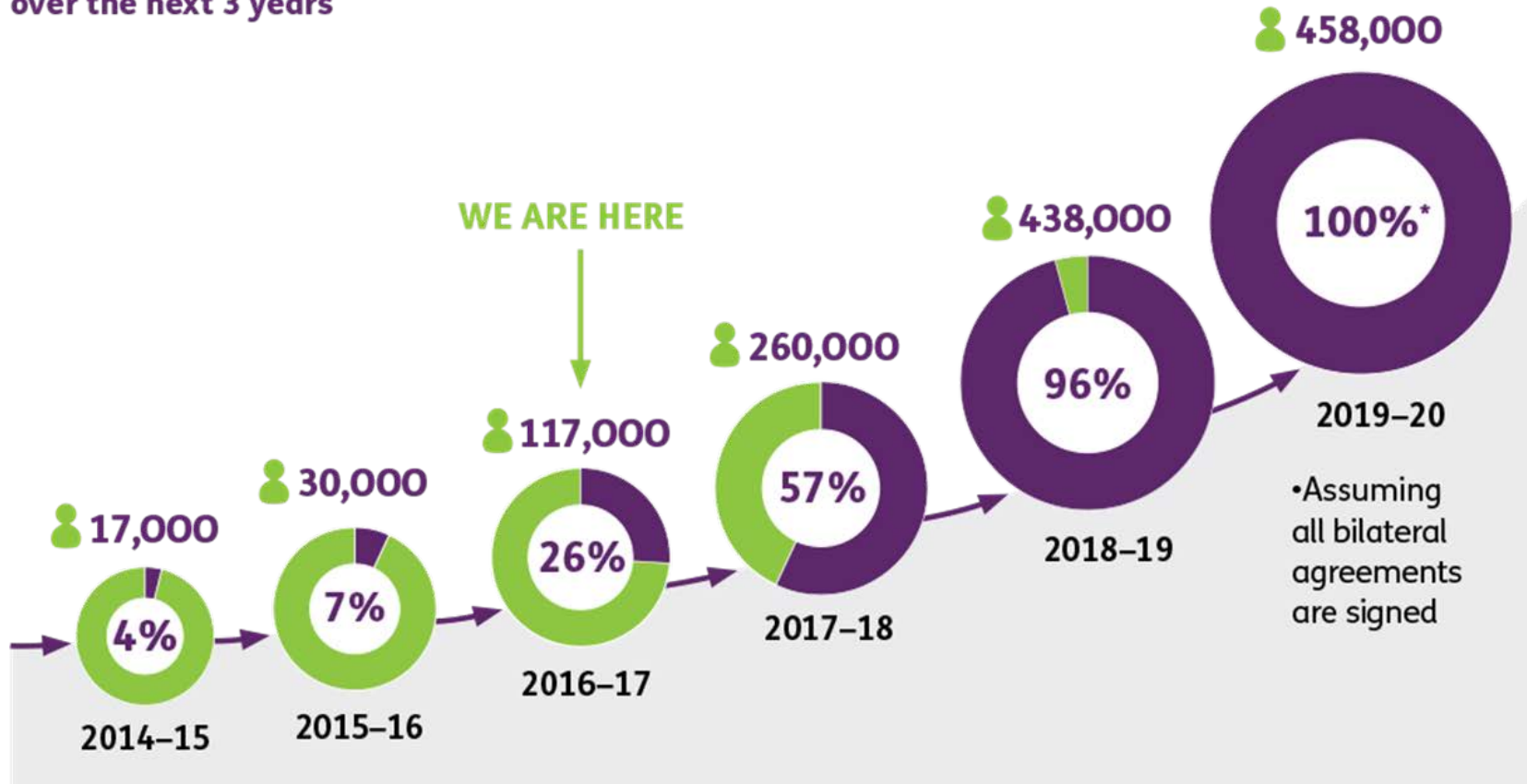
**Individual Goals
and Aspirations**

**Informal, Mainstream
and Community Supports**
(provided by other
systems, family, friends
and community)

NDIS Funded Supports
(reasonable and
necessary)

The NDIS path ahead

The Scheme will grow substantially over the next 3 years



The NDIS in New South Wales

From 1 July 2016

- Central Coast
- Northern Sydney
- South Western Sydney
- Southern NSW
- Western Sydney
- Remaining populations of Hunter New England and Nepean Blue Mountains

From 1 July 2017

- Illawarra Shoalhaven
- Mid North Coast
- Murrumbidgee
- Northern NSW
- South Eastern Sydney
- Sydney
- Western NSW
- Far West

1 July 2018

The NDIS is operating state-wide



The NDIS in Western Sydney

**Uniting Western Sydney
District Hubs can be found at
the following locations:**

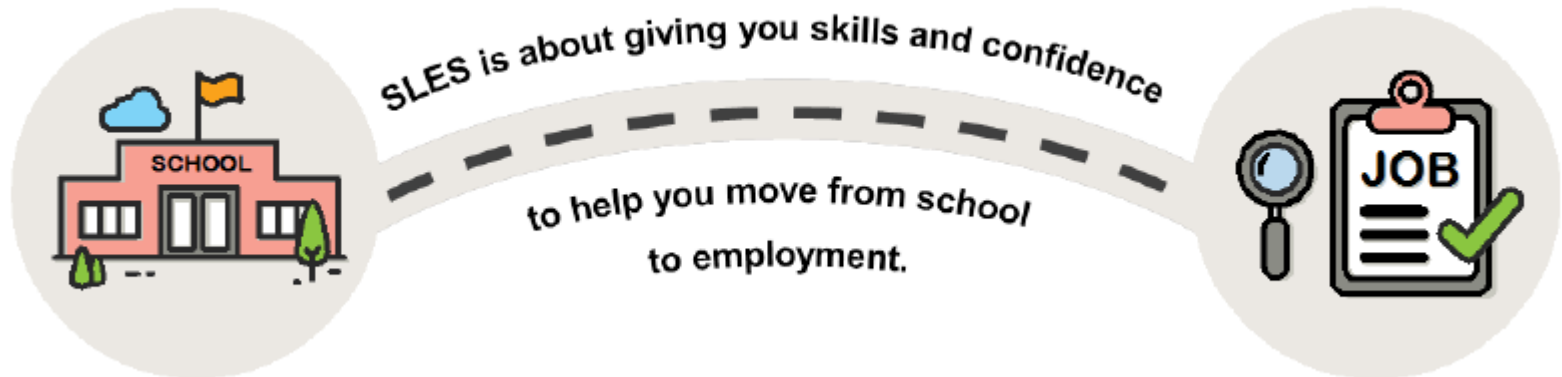
- Parramatta (District Head Office) – 29 LACs – includes Auburn and Holroyd
- Baulkham Hills – 11 LAC's
- Blacktown – 28 LAC's



School Leaver Employment Supports (SLES)

SLES aims to create a pathway from school and into post-school life:

- **Increase young people's confidence and aspirations** for employment.
- Partner with Education to support the **pathway from school into post-school** life.
- Enable young people to **choose a provider based on evidence** of success.



Local Area Coordination

- Local Area Coordinators (LACs) will support NSW participants and their families to successfully transition to the NDIS. They will assist with the planning process, plan implementation and facilitate access to appropriate supports and services.
- Most participants will also have an LAC assist with plan implementation, others may need more frequent and funded support coordination.
- The NDIA has partnered with Uniting and St Vincent de Paul Society NSW to deliver NSW LAC services during transition from January 2016 – 30 June 2018.



Support Coordination

Primary roles of Support Coordinator are:

- Support implementation and identify options for all supports in the plan, including informal, mainstream and community, as well as funded supports.
- Strengthen and enhance the participant's abilities to coordinate supports and participate in the community, reach decisions and develop agreements with support providers.
- Ensure mainstream services meet their obligations (i.e. housing, education, justice, health).
- Build capacity of the participant to achieve greater independence, self-direct supports in the longer term and understand funding flexibility.
- Be available – to ensure new support arrangements endure and in times of 'crisis'.
- Provide NDIA with reports on outcomes and success indicators within agreed reporting frequency.

Differences between LAC, Planner & Support Coordinator

LAC	Planner	Support Coordinator
<ul style="list-style-type: none"> ✓ Uniting and St Vincent de Paul Society NSW until 30 June 2018. 	<ul style="list-style-type: none"> ✓ NDIA Staff 	<ul style="list-style-type: none"> ✓ NDIA Registered Service Providers
<ul style="list-style-type: none"> ✓ Conduct planning conversation process for participants. 	<ul style="list-style-type: none"> ✓ Conduct planning conversation for participants. 	<ul style="list-style-type: none"> X Do not conduct planning conversation
<ul style="list-style-type: none"> X Do not make reasonable and necessary decisions or approve plans. 	<ul style="list-style-type: none"> ✓ Make reasonable and necessary decisions in accordance with the NDIS Act 2013, approve plans. 	<ul style="list-style-type: none"> X Do not come into contact with NDIS participants until they have an approved plan.
<ul style="list-style-type: none"> ✓ Support participants to implement and review their plans. 	<ul style="list-style-type: none"> X Do not support participants to implement their plans. 	<ul style="list-style-type: none"> ✓ Support participants to implement and review their plans.

Questions?

Visit: www.ndis.gov.au/NSW

Phone: 1800 800 110

TTY: 1800 555 677

National Relay Service: 1800 555 727

Uniting Local Area Coordination Program

Phone: 02 8833 0500

lacinfo@uniting.org



Delivering the NDIS in your community

